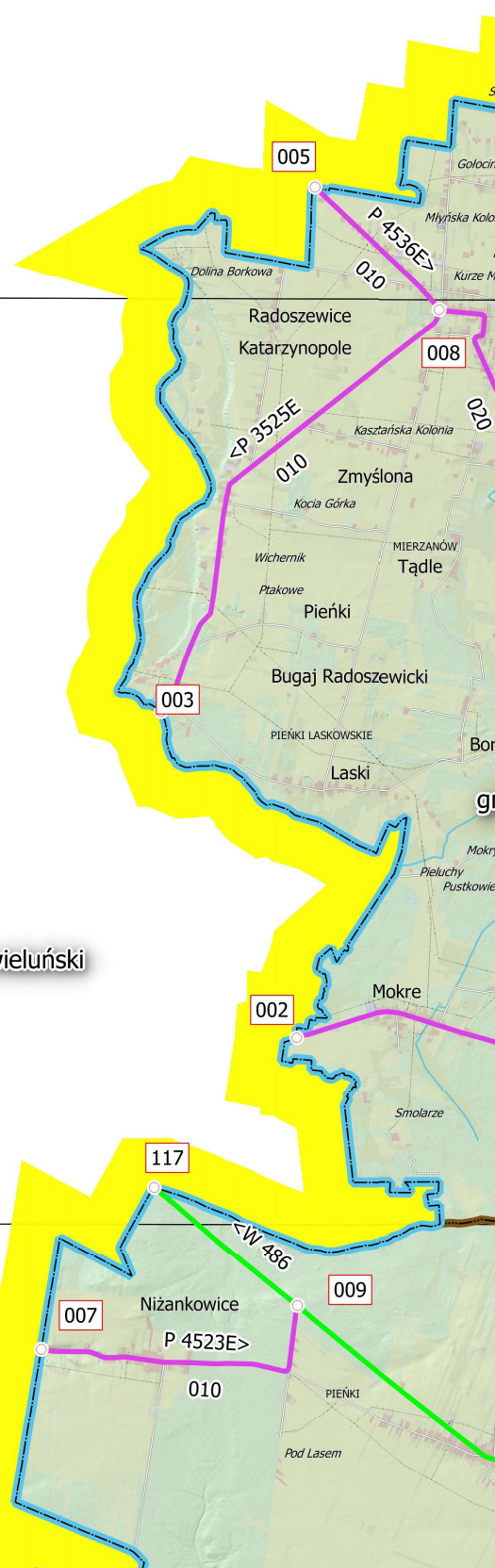


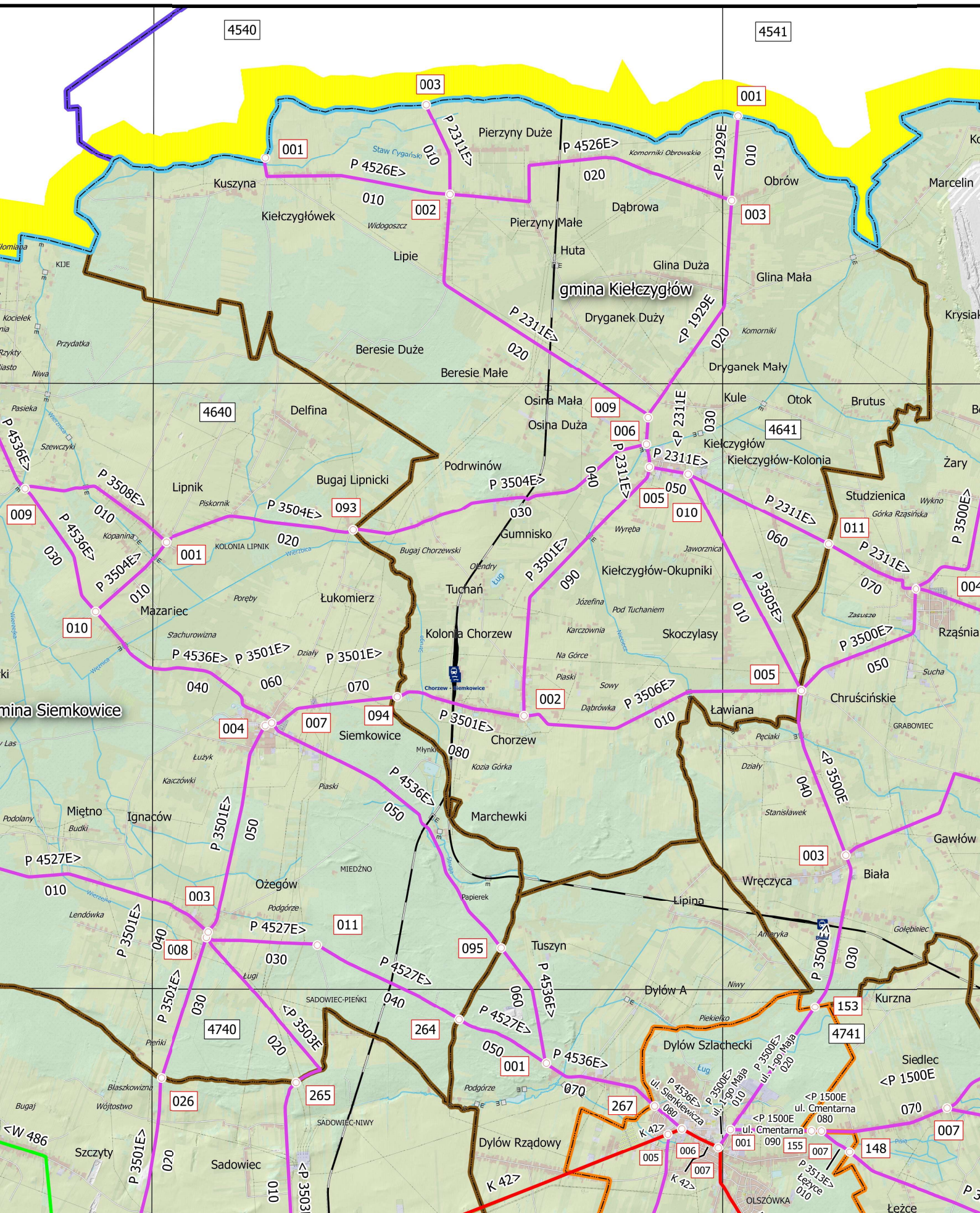
4539

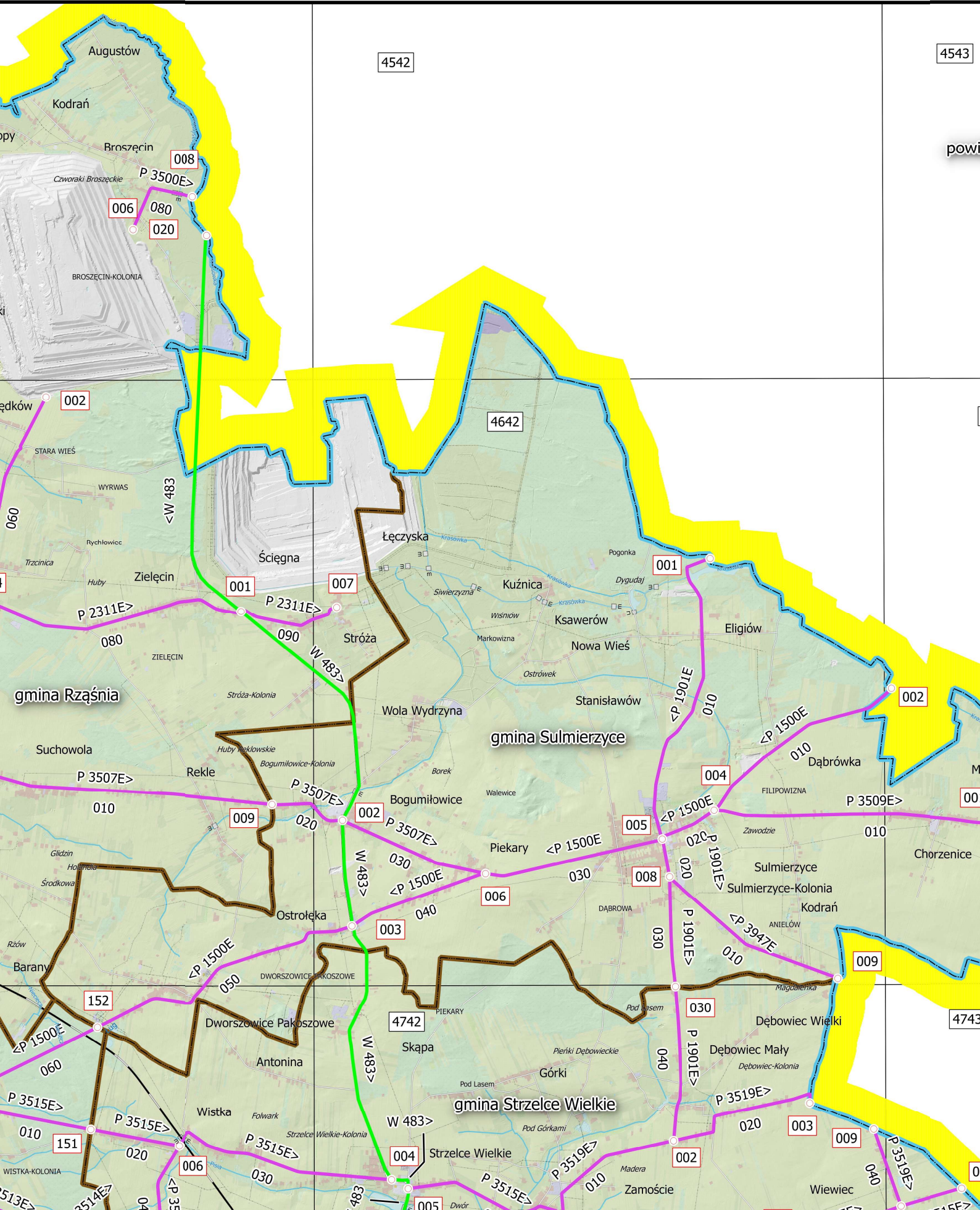
4639

4739

powiat wieluński

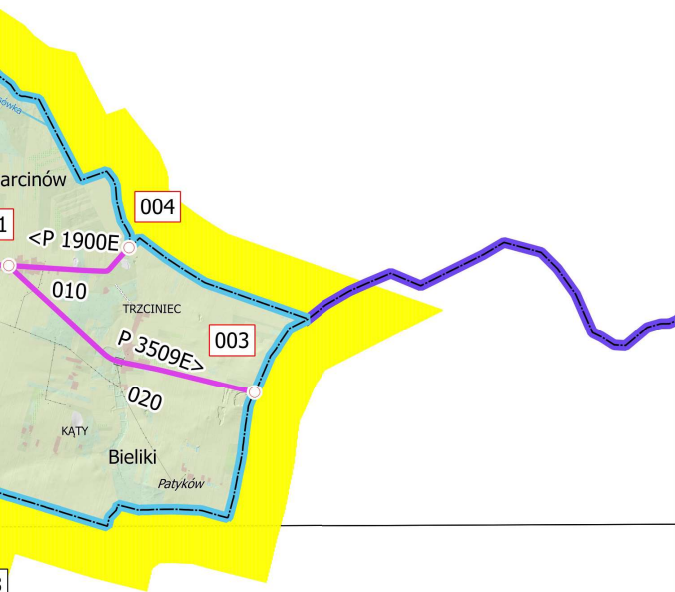




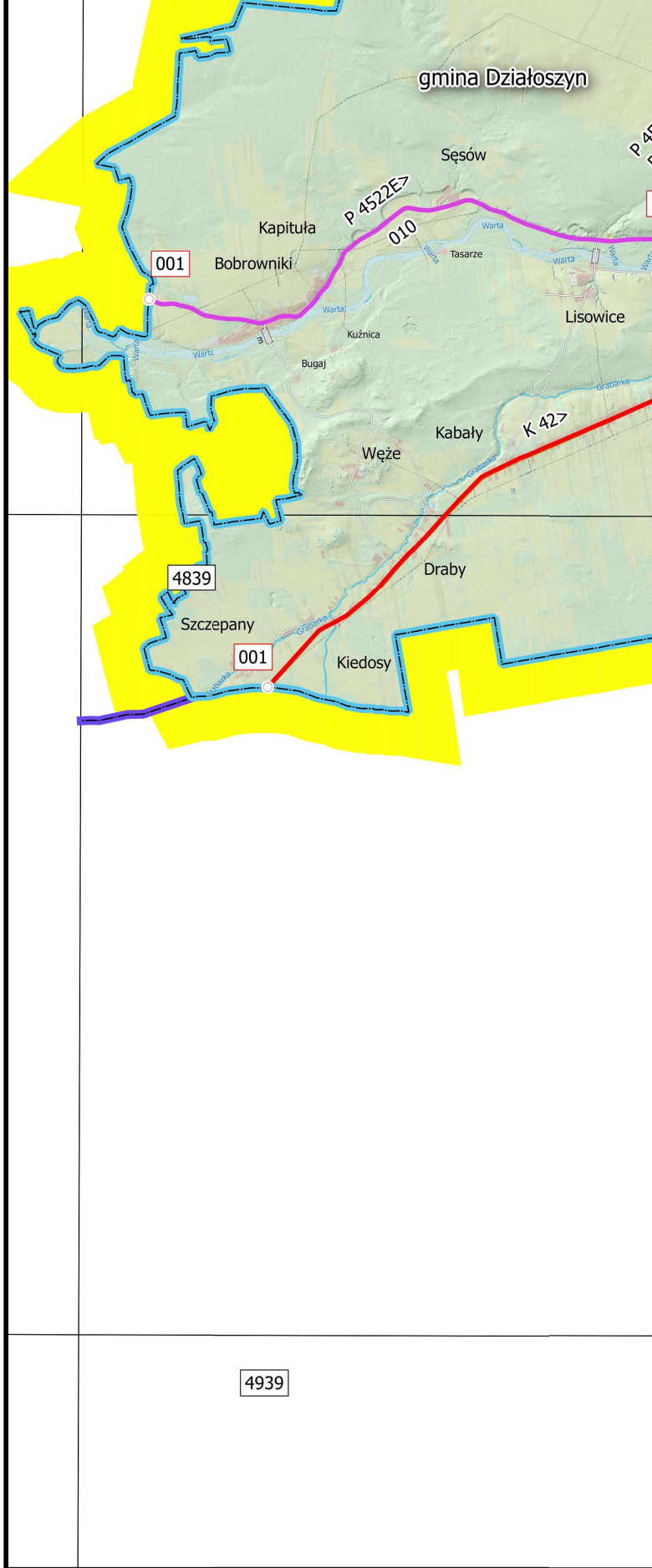


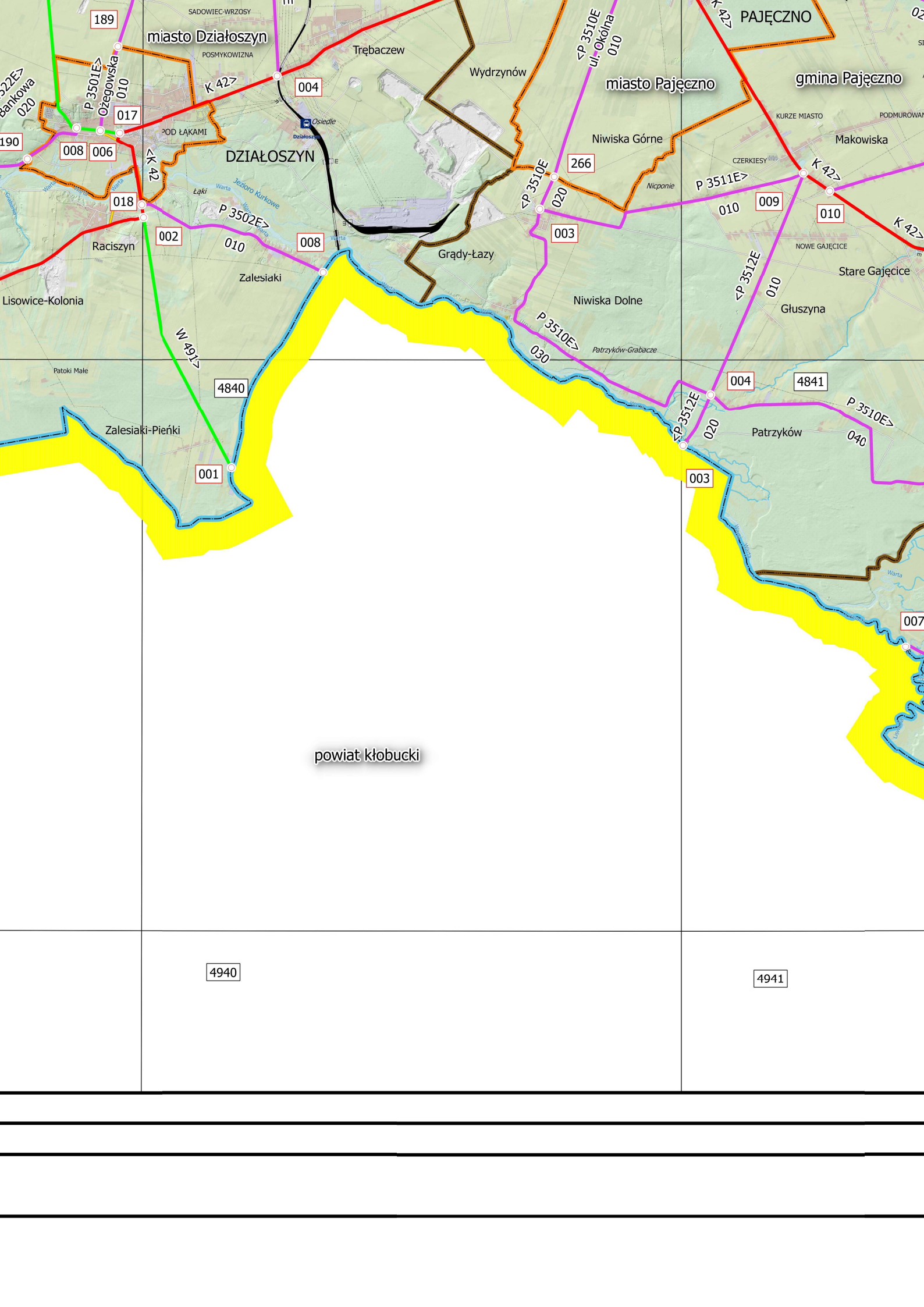
at bełchatowski

4643



03





miasto Działoszyn

miasto Pajęczno

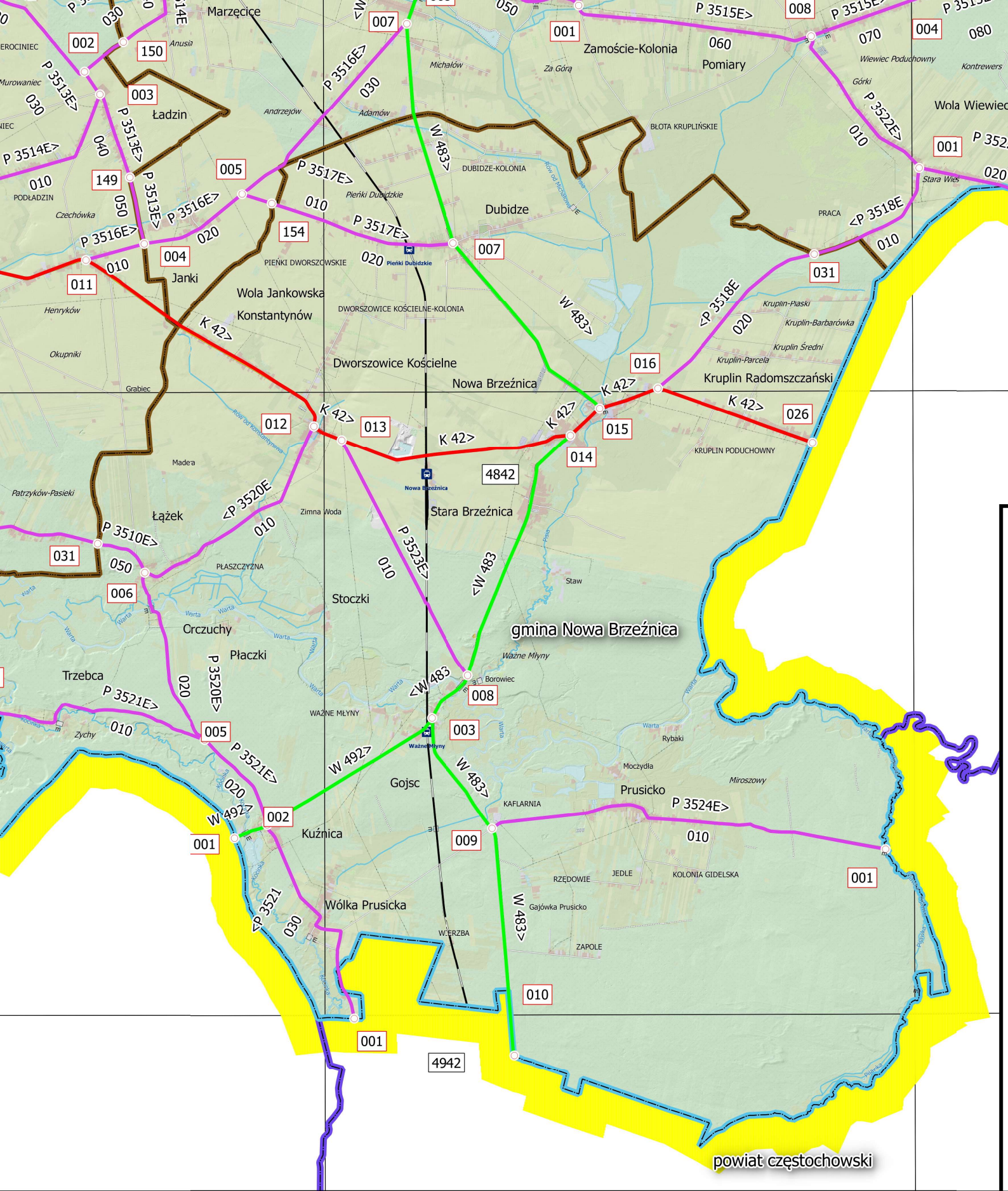
gmina Pajęczno

DZIAŁOSZYN

powiat kłobucki

4940

4941



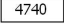

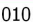
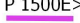
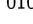








powiat radomszczański



POWIATOWY ZARZĄD DRÓG  
W PAJĘCZNIĘ Z/S W DZIAŁOSZYŃCIE  
WOJEWÓDZTWO ŁÓDZKIE

MAPA SIECI DROGOWEJ

-  - punkt referencyjny
-  - numer punktu
-  - numer sektora
-  - numer, kierunek przebiegu
-  - numer odcinka
-  - numer, kierunek
-  - numer odcinka
-  - droga krajowa
-  - droga wojewódzka
-  - droga powiatowa
-  - linia kolejowa
-  - granica gminy
-  - granica obrębu

skala 1:50 000

0 1 2 3 4 5 km

Opracowanie



ul. Marii Dąbrowskiej 8 - 62 - 500 Konin  
telefon 063/2467445 - Telefax 063/2467446  
e - mail: info@lehmann-partner.pl  
internet: http://www.ewidencjadrog.pl

Stan: Kwiecień 2016

Projekt 15250